



Little Britches Rodeo Service Packages:

- \$25.00 Service Package (covers the full duration July 25 -Aug 2)
- \$5.00 per day (covers a 24hr period)

Account Setup

Select a Package: Single Account \$25/Month

Username: Business Package \$45/Month

Password: Single Account \$25/Month

Retype Password: State Fair - Little Britches \$25/July 25th - August 2nd

letters/numbers only, no special characters e

Do you agree to the Terms and Conditions/Privacy Policy Yes

Sign Up

Don't forget to select the Little Britches package if you want the full duration option.



To search for and connect to a wireless network:

1. Right-click the wireless network connection icon in your taskbar, as shown in Figure 1, and then click View Available Wireless Networks.
2. The Wireless Network Connection dialog box appears, as shown in Figure 2. If no networks appear, click Refresh Network List in the upper-left corner.
3. Choose an Airinet network by clicking on its name, and then click Connect.

Note: The customer access points do not require a key to connect, if you are prompted for a key, you are not connecting to the Airinet public network. In this case, go back to the network list and select an Airinet network.

4. Windows XP will change the network's connection status to Acquiring Network Address, and then to Connected. You can now close the Wireless Network Connection dialog box.
5. Open your web browser; you will see a login page as shown in figure 3. Login if you already have an ID, if not, click sign-up, then fill-out the proper fields and choose your package choice.

Figure 1



Figure 2

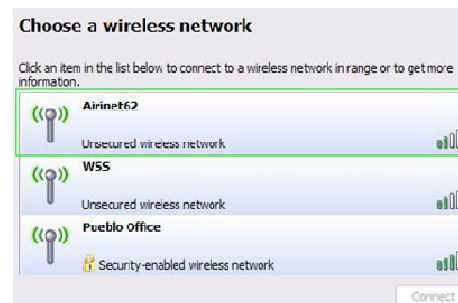


Figure 3

